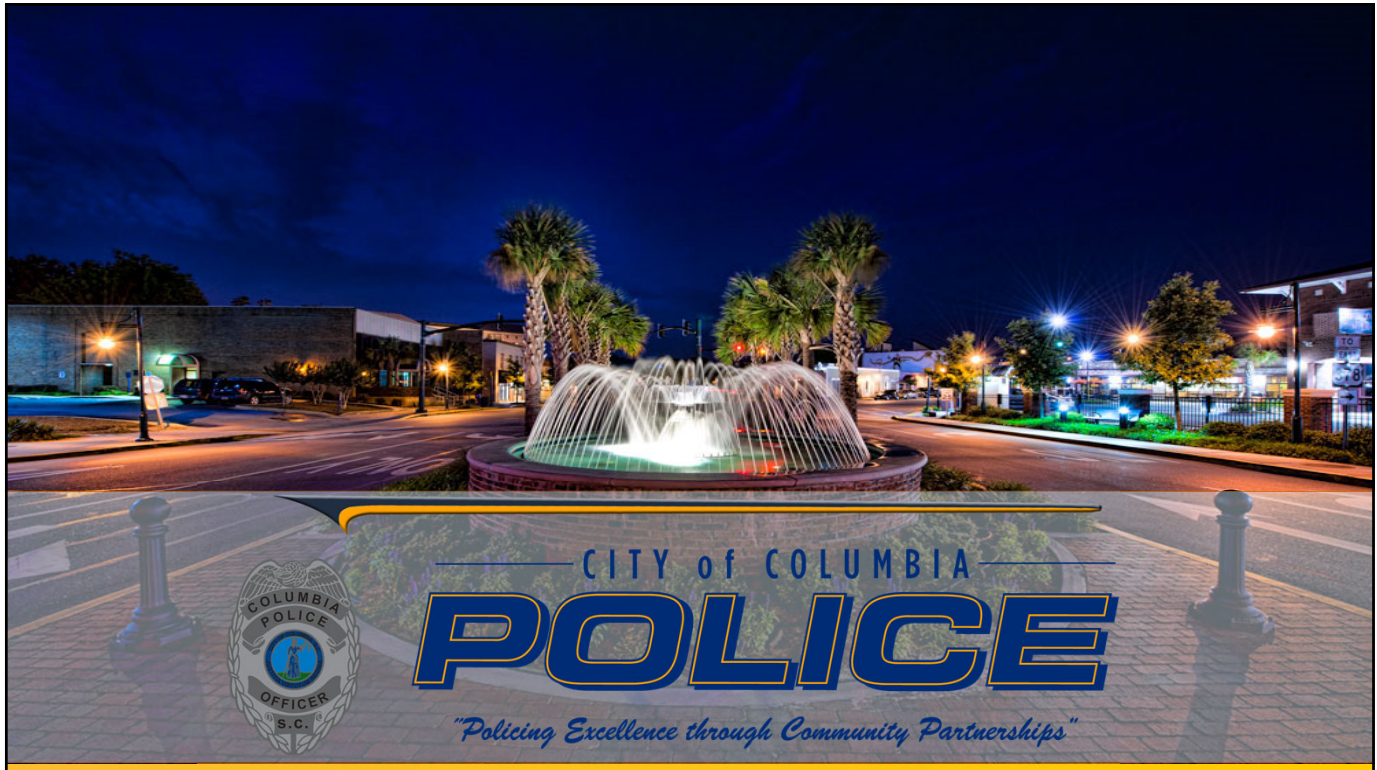


The information provided here is for informational and educational purposes and current as of the date of publication. The information is not a substitute for legal advice and does not necessarily reflect the opinion or policy position of the Municipal Association of South Carolina.
Consult your attorney for advice concerning specific situations.



2



Our Mission

The Columbia Police Department will provide professional and ethical service in protection of our citizens while preventing crime and reducing the fear of crime through problem solving partnerships.



Topics:

3

Background

Technology

Enforcement

Prevention & Intervention

Partnerships



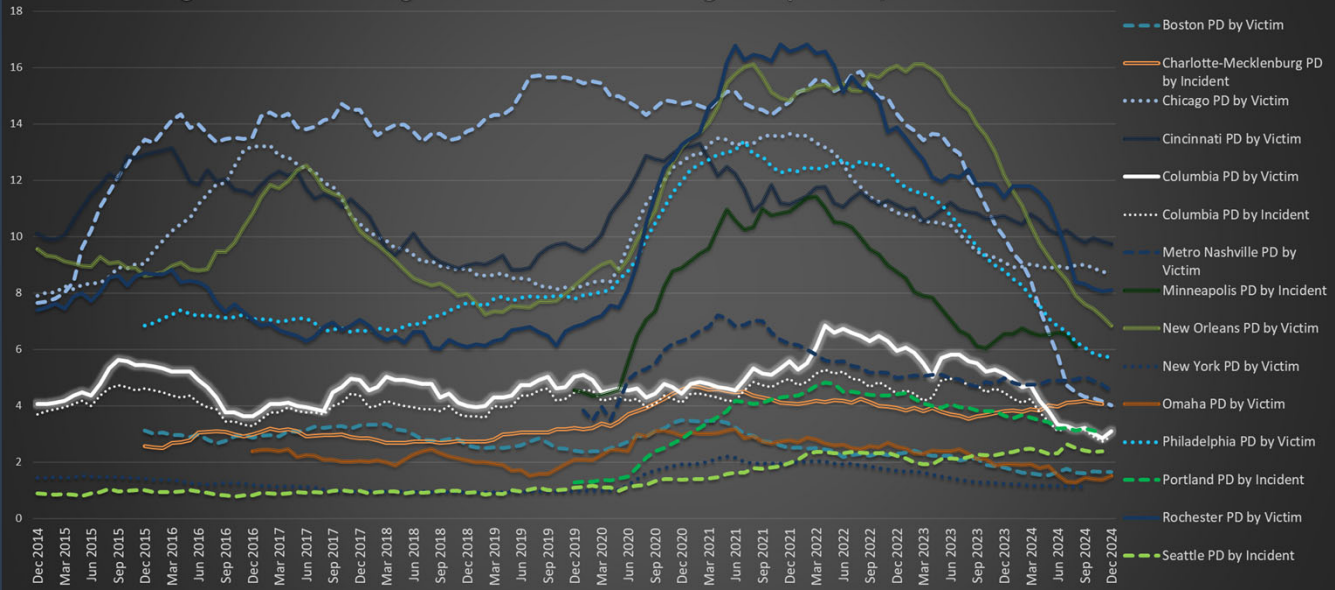
4

Background

National Trends in Gun Violence

5

Rolling 12 Month Average of Person Hit Shooting Rate per 100,000 Residents



Measuring Success in Comparison to National Trends

6

88% of these agencies saw a decrease in shooting rates in the past year.

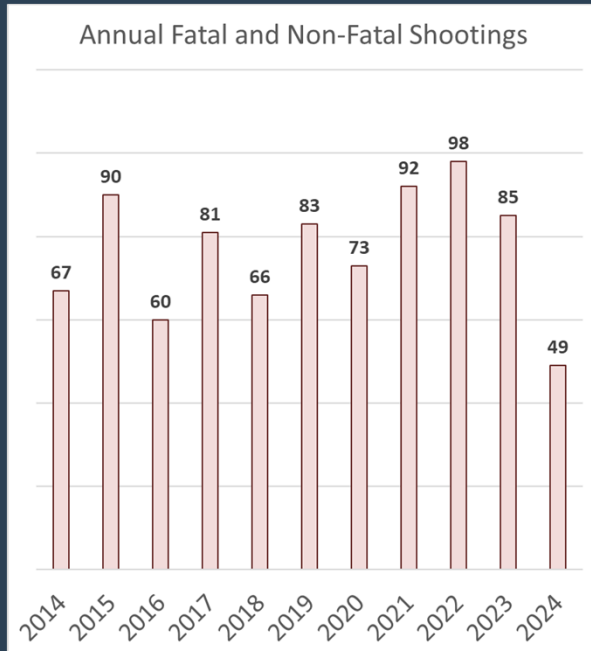
Only 43% of them have recovered to shooting rates at or below 2019 levels.

Columbia had a greater shooting rate decrease relative to 2019 than all agencies in this dataset except Baltimore.

Count Type	Agency	Dec 2024	% Change Since Dec 2023	% Change Since Dec 2019
Victim	New York PD	1.1	-7%	20%
Victim	Omaha PD	1.5	-21%	-27%
Incident	Boston PD	1.7	-9%	-32%
Victim	Seattle PD	2.4	4%	120%
Victim	Columbia PD	2.9	-35%	-35%
Victim	Portland PD	3.0	-16%	139%
Incident	Columbia PD	3.1	-40%	-39%
Victim	Baltimore PD	4.0	-60%	-74%
Incident	Charlotte PD	4.1	6%	26%
Victim	Metro Nashville PD	4.5	-9%	18%
Victim	Philadelphia PD	5.7	-35%	-27%
Victim	Minneapolis PD	6.1	-7%	34%
Incident	New Orleans PD	6.9	-44%	-17%
Incident	Rochester PD	8.1	-29%	19%
Victim	Chicago PD	8.7	-4%	7%
Incident	Cincinnati PD	9.7	-9%	1%

Fatal and Non-Fatal Shootings Trends in Columbia

7



Gun Violence 101

8

Dynamics of Gun Violence

People

Places

Behaviors

Solutions to Gun Violence

Focused

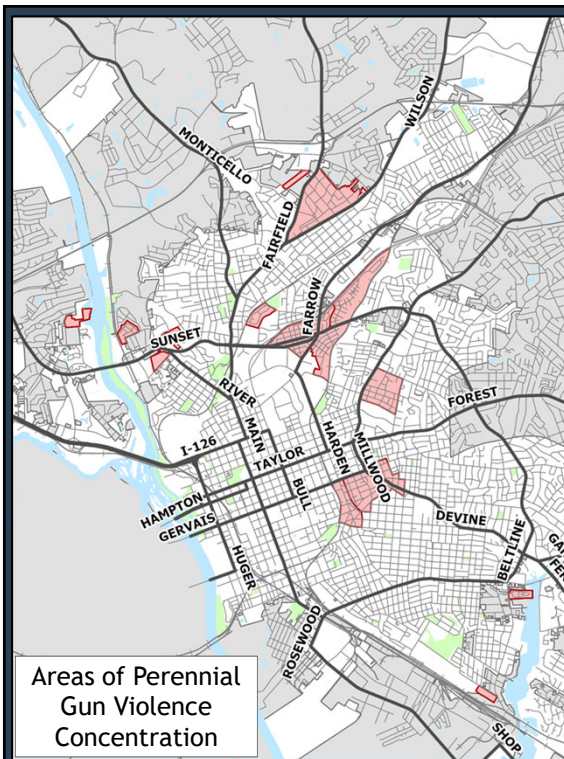
Balanced

Fair



9

Technology



ShotSpotter Technology (SST)

10

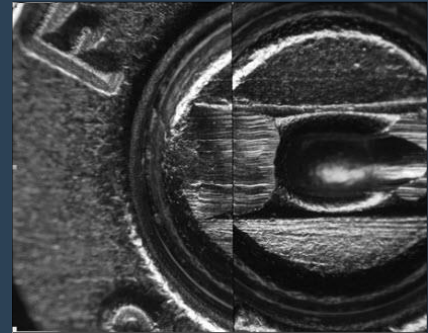
ShotSpotter gets officers to shooting scenes more quickly, more accurately and more regularly.

 **ShotSpotter®**

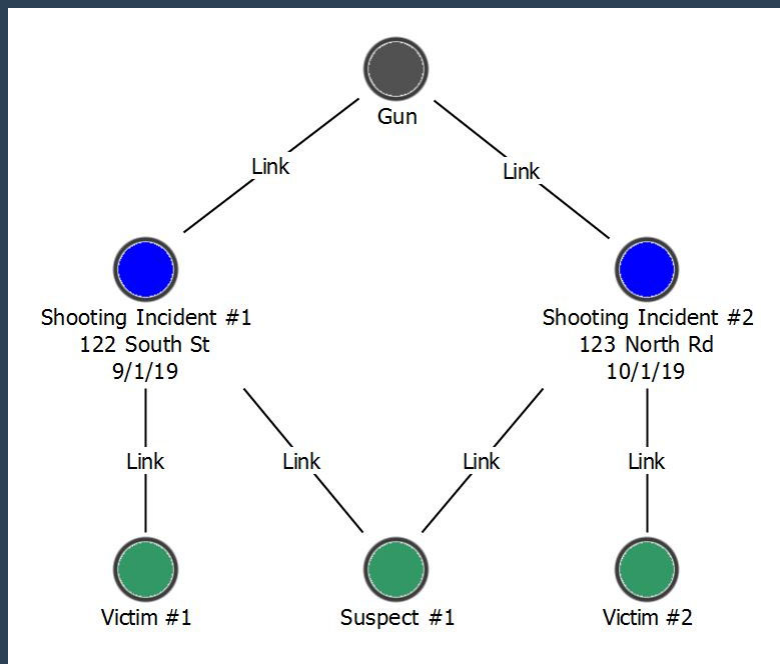
●●●● National Integrated Ballistic Information Network (NIBIN)

11

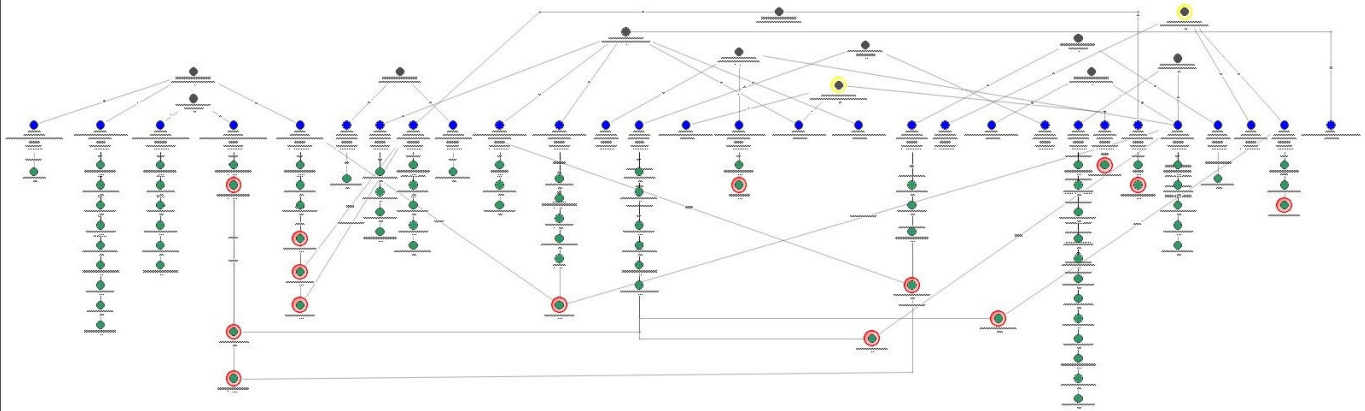
Traditional Forensic Firearms Examination Vs. NIBIN



Hypothetical Example of Visualized NIBIN Data



A Real-Life Example of Interrelated Shooting Incidents



Real-Time Crime Center

14

Automated
License Plate
Readers

ShotSpotter

Real-Time
Crime
Center

Security
Camera
Network

Alastar
Officer
Tracking





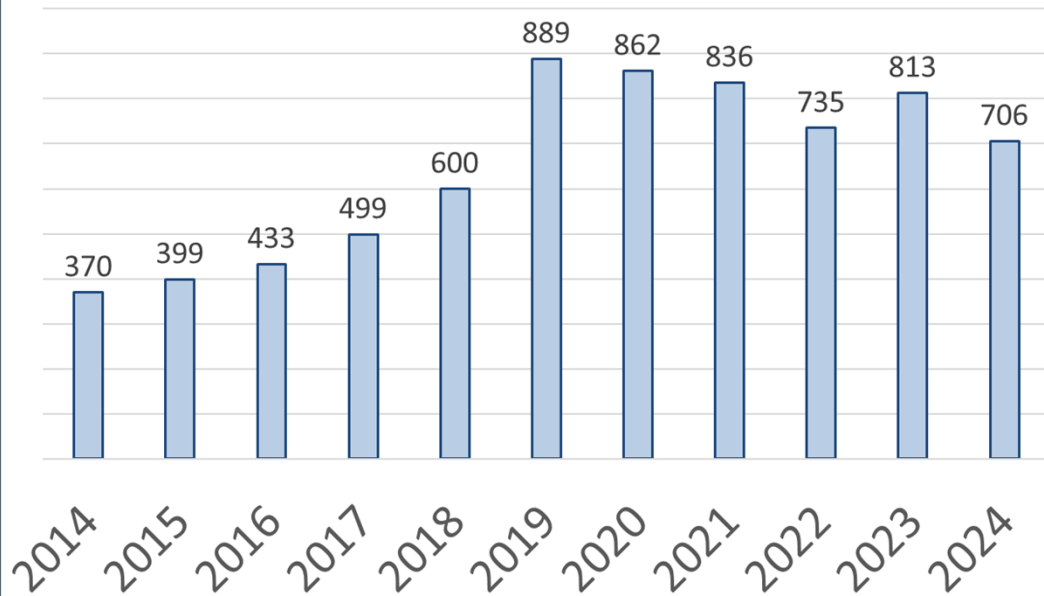
15

Enforcement



16

Annual Gun Seizures





Gun Seizures and ShotSpotter Adoption

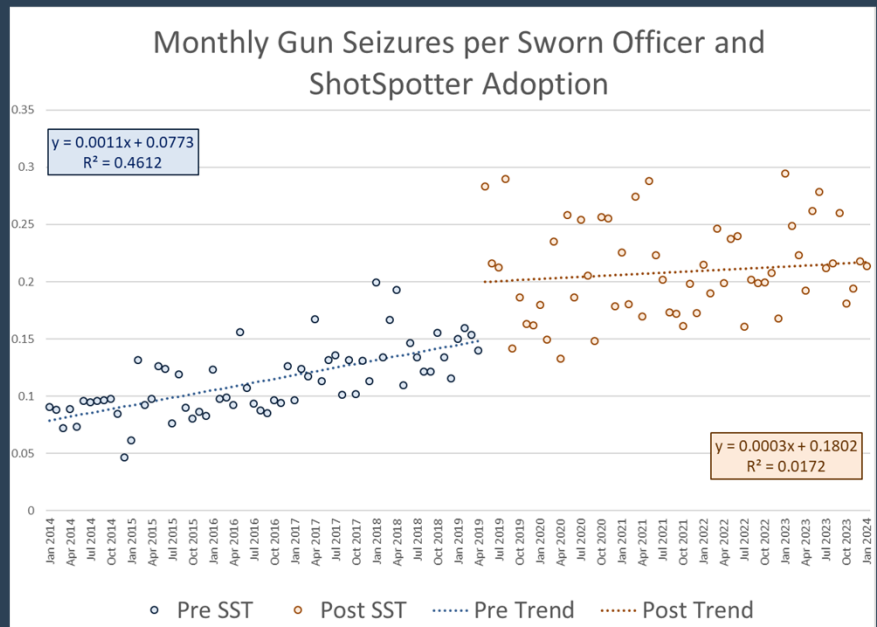
17

CPD experienced a roughly **45% increase** in monthly gun seizures after implementing ShotSpotter.

This increase of roughly 22 more guns per month was **statistically significant**, even when controlling for pre-existing trends and staffing levels.

Regression Details (OLS):

Variables	Estimate	95% CI	P-value
ShotSpotter Adoption	22.3	12.4 to 32.2	< 0.000
Pre-existing Trend	0.38	0.2 to 0.5	< 0.000
Change in Trend	-0.53	-0.9 to -0.1	0.009
Staffing Levels	0.08	-0.1 to 0.2	0.395



Gun Seizures and Constitutional Carry

Average Monthly Gun Seizures:

Under CWP*: **63.4**

After Const. Carry: **57.7**

Average monthly gun seizures declined by **5.7** after constitutional carry was passed, a **9%** decrease.

Statistics:

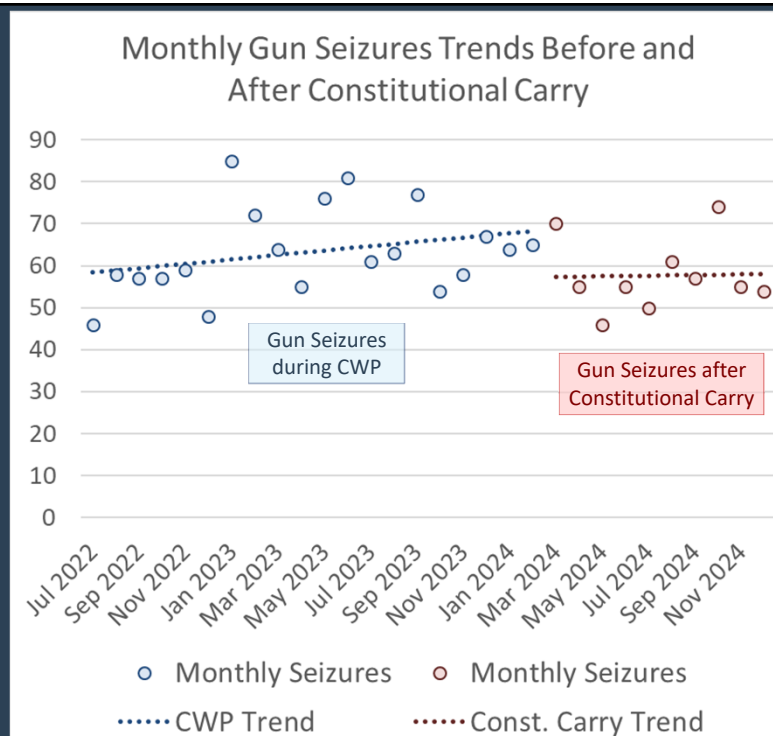
Welch's Two Sample t-test: $p = 0.1287$

ITS OLS: treatment $p = 0.179$

ITS Poisson: treatment $p = 0.0882$

ITS NB: treatment $p = 0.141$

*I started the analysis with July 2022 because there were large staffing fluctuations prior to this but not after. Previous analysis indicates that staffing level changes impact gun seizure





Murder and Non-Fatal Shooting Unit

19

Following a recommendation from the National Case Closed Project, CPD created a detective unit dedicated exclusively to the investigation of murders and non-fatal shootings.



National Murder Clearance Rate:

~60%

CPD 2024 Murder Clearance
Rate:

100%



20

Prevention and Intervention



Ceasefire Columbia

Law Enforcement Partners:

- United State Attorney's Office
- Bureau of Alcohol, Tobacco, Firearms, & Explosives
- SC Dept. of Probation, Parole & Pardon
- Federal Bureau of Investigations
- Richland County Sheriff's Office
- 5th Circuit Solicitor's Office
- SC Law Enforcement Division

Service Providers:

- SC Dept. of Employment and Workforce
- LRADAC
- Richland One Adult Education
- Midlands Fatherhood Coalition
- Project NAS (Not A Statistic)
- Serve & Connect
- United Way - Midlands
- Alston-Wilkes Society
- Richland County Library



Program Design

Identify High-Risk Probationers

Conduct "Call-In"

Promise Consequences for Reoffending

Connect Participants with Service Providers

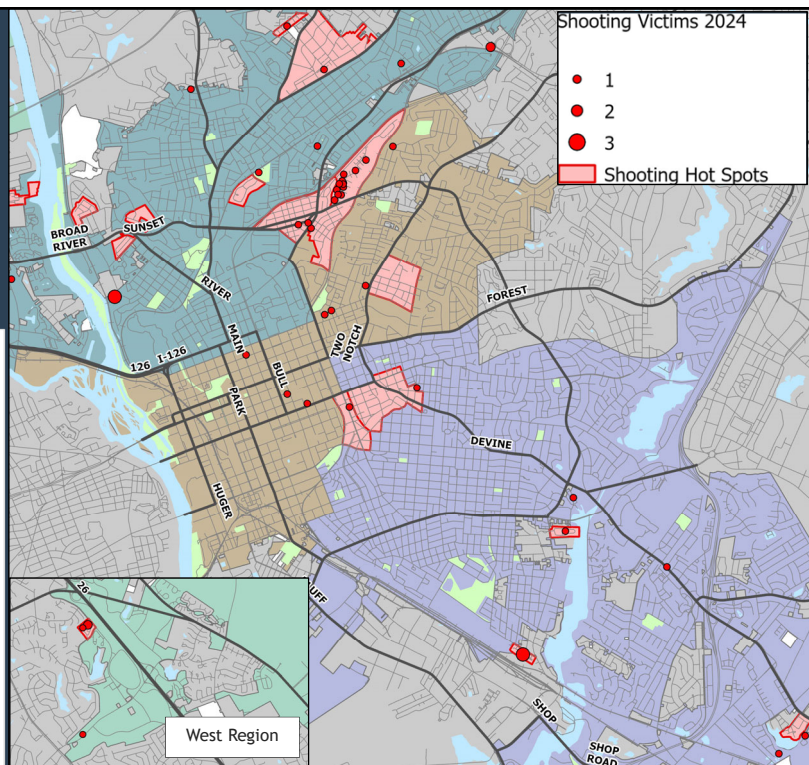
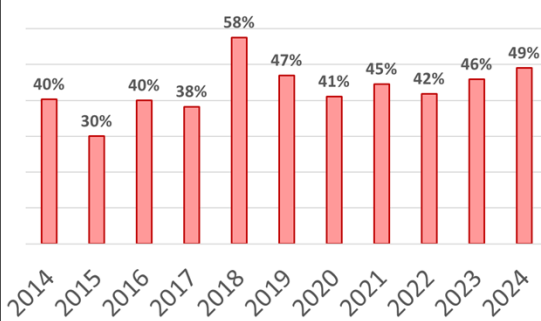
Prolonged Follow-up

Reduce Recidivism

Place-Based Gun Violence Reduction

The perennial shooting hot spots together make up just **3%** of Columbia's surface area (1.8 square miles)

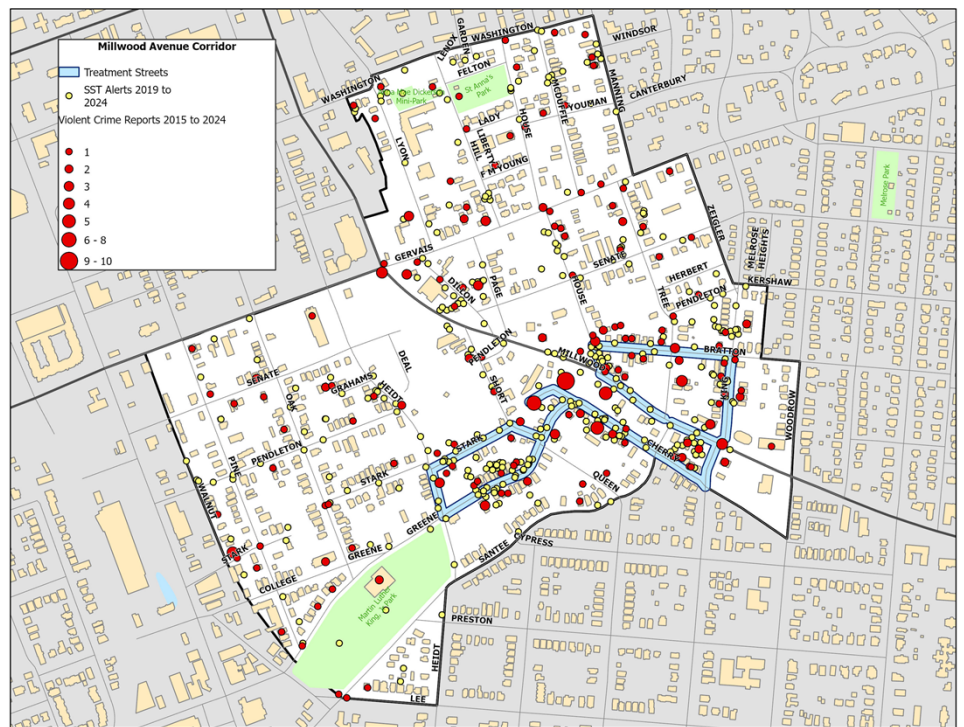
% of Shootings Occurring in Perennial Hot Spots



Violent Streets, Not Violent Neighborhoods

Just 10% of the Streets Account
for a Huge Proportion of all
Neighborhood Crimes

Property Crimes: **21%**
Violent Crimes: **50%**
SST Alerts: **48%**
Person-Hit Shootings: **62%**



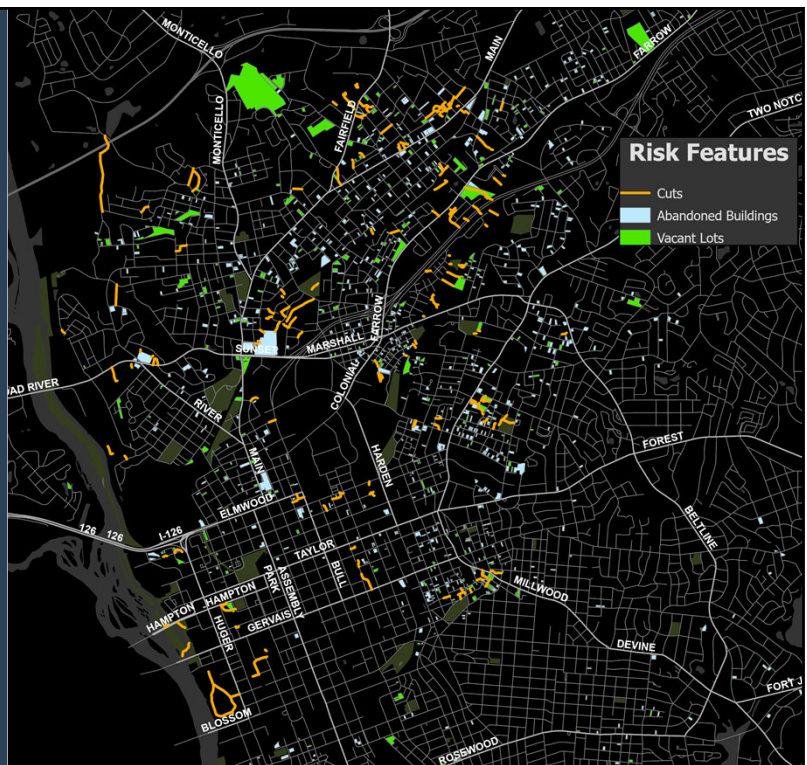
Built Environment and Gun Violence Risk

Environmental Features Examined

Certain features of the environment such as abandoned buildings, overgrown vacant lots, and un-official pedestrian walkways are statistically correlated to gun violence.

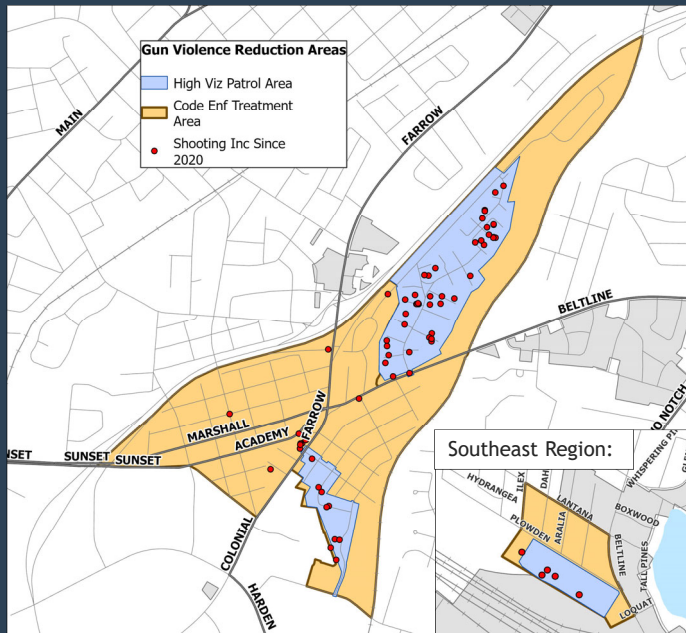
Empirical research in other jurisdictions has given evidence a causal relationship between some of these features and violent crime.

Risk Factor Present	Beta Coefficient	Increased Relative Risk
Intercept (No Risk Factors)	-8.9797	
Cuts	1.989	631%
High Ab Building Density	1.1889	228%
Abandoned Building Present	0.9153	150%
High Vacant Lot Density	0.2813	32%
All Four Risk Factors Present	4.3745	7840%



Area Selection and Strategy

25



Area Selection:

As of June 2024 there had been **16 people shot** in the treatment area.

This was **57% of all shootings** in the first half of 2024.

For this reason these areas were chosen to be the focus of the intervention

Strategy:

Patrol officers increased high-visibility and proactive activity in the blue areas in the map to right where gun violence had been clustered. They were to give priority to the hours of roughly 9pm to 2am Thurs, Fri, Sat, which were the times of highest gun violence.

Code enforcement officers gave systematic attention to remediating overgrown vacant lots, securing vacant buildings, and addressing other crime-related blight issues in all of the orange areas in the map to the right.

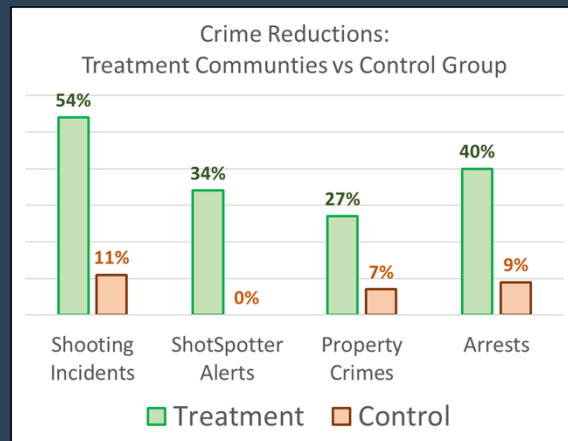
Outcomes

26

Crime Reductions in Treatment Neighborhoods:

Shooting Incidents: 54% Reduction
ShotSpotter Alerts: 34% Reduction
Property Crimes: 27% Reduction
Arrests: 40% Reduction

These are changes in crime totals in comparison to the 90 days prior to the intervention.





27

Partnerships



28

Partnerships



**Columbia Police Department**

#1 Justice Square
Columbia, SC 29201

**Social Media**

Facebook, Twitter & Instagram - @columbiapdsc



(803)545-3500



www.columbiapd.net