


The information provided here is for informational and educational purposes and current as of the date of publication. The information is not a substitute for legal advice and does not necessarily reflect the opinion or policy position of the Municipal Association of South Carolina. Consult your attorney for advice concerning specific situations.

# South Carolina Office of Resilience

SC Community Development Association Fall Meeting  
October 2, 2025



---

---

---

---

---

---

---

## History

1980	2015	2016	2018	2018	2020	2021	2023	2024
Hurricane Hugo	SC Disaster Recovery Office created following Historic Floods of 2015, which resulted from Hurricane Joaquin	Hurricane Matthew	Hurricane Florence	Floodwater Commission established	Disaster Relief and Resilience Act signed, creating the Office of Resilience	Officially began operation at the start of FY 2022	Published South Carolina's first Statewide Resilience Plan	Hurricane Helene

---

---

---

---

---

---

---

## Mission

SCOR lessens the impact of disasters on the communities and citizens of South Carolina by planning and coordinating statewide **resilience, long-term recovery** and **hazard mitigation**.



---

---

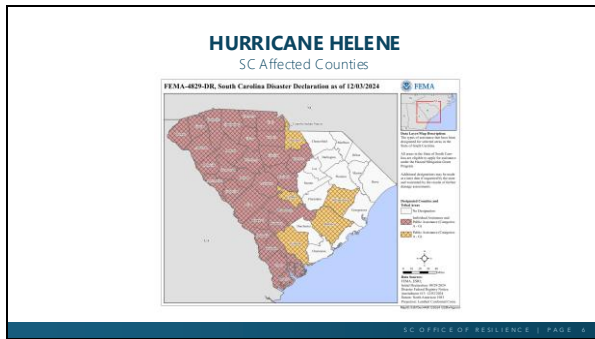
---

---

---

---

---




---

---

---

---

---

---

---

---

### SCOR's Work with VOADs/COADs/LTRGs

Coordinate with VOADs to repair and replace disaster-impacted homes

Connect citizens with VOADs that can address unmet financial, physical, or emotional needs

Identify funding resources for volunteer and non-profit organizations

SC OFFICE OF RESILIENCE | PAGE 4

---

---

---

---

---

---

---

---

### Examples of Current SCOR Partnerships

Can we count on you as a partner?

SC OFFICE OF RESILIENCE | PAGE 4

---

---

---

---

---

---

---

---

### How You Can Help

- Let us know what your organization does and where you are working.
- Become part of our services referral network.
- Help us identify additional needs, particularly communities or individuals who are not currently receiving assistance.
- Jo in our Common Housing Operation Picture (CHOP) and share data with SCOR & we can share data with you.



SC OFFICE OF RESILIENCE | PAGE 12

---

---

---

---

---

---

---

---

## Resilience Planning and Implementation

---

---

---

---

---

---

---

---

### What is Resilience?

The ability of communities, economies, and ecosystems to **anticipate, absorb, recover, and thrive** when presented with environmental change and natural hazards.




---

---

---

---

---

---

---

---

## A little bit of resilience theory: shocks & stresses

### Shocks

Sudden events that impact vulnerability

- Hurricane
- Flash flood / "Rain bomb"
- Hazardous waste spill
- Earthquake

### Stresses

Long-term trends that undermine system stability and increase vulnerability

- Aging infrastructure
- Rapid population growth
- Sea level rise
- Drought

SC OFFICE OF RESILIENCE | PAGE 12

---

---

---

---

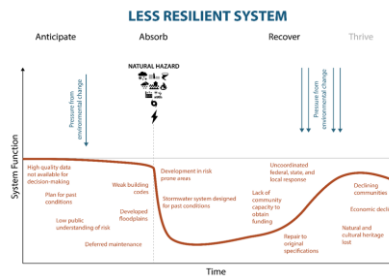
---

---

---

---

## What makes a system less resilient?



SC OFFICE OF RESILIENCE | PAGE 14

---

---

---

---

---

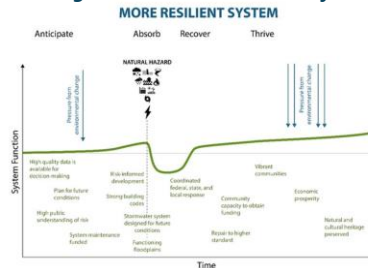
---

---

---

## What are benefits of working toward a more resilient system?

- Increased disaster preparedness
- Reduced recovery time
- Economic vitality
- Improved infrastructure
- Environmental protection
- Empowered public
- Cohesive community planning



SC OFFICE OF RESILIENCE | PAGE 15

---

---

---

---

---

---

---

---

## Key points about resilience



Building resilience is highly localized



It involves detailed knowledge of local risks and vulnerabilities as well as locally-developed solutions



Think holistically! As much as possible, consider building resilience to all relevant hazards and collaborate within and between departments.

SC OFFICE OF RESILIENCE | PAGE 16

---

---

---

---

---

---

---

---

## Purpose: Watershed Coordination

Coordinate with communities at the watershed level to identify risks and vulnerabilities, develop solutions, and build community capacity by leveraging local, region, state, and federal partnerships.

17

---

---

---

---

---

---

---

---

## The Watershed Approach

"Water doesn't follow political boundaries"

Each of the 8 major river basins will be assigned a watershed coordinator from SCOR.



- Watershed: an area of land where all the water drains to a common point, such as a stream, river, lake, or ocean
- Flood management plans and actions should be based on watershed boundaries (SC Floodwater Commission Report)
- Allows for the implementation of projects, programs, and policies that meet local needs and consider the impacts of projects on the larger watershed (Statewide Resilience Plan)

SC OFFICE OF RESILIENCE | PAGE 18

---

---

---

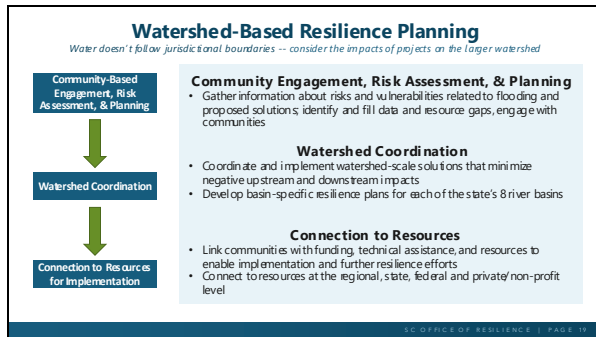
---

---

---

---

---




---

---

---

---

---

---

---

---

### Resilience planning resources your community can access now

First Street Flood Model data

SCOR's Resilience Atlas

'Resilience 101' training for your jurisdiction

SCOR OFFICE OF RESILIENCE | PAGE 20

---

---

---

---

---

---

---

---

### Connect with SCOR

Invite us for an in-person or virtual discussion about your services and how they align with our mission.

Attend SCOR's monthly stakeholder meetings to learn about our recovery efforts.

Sign up for SCOR's monthly newsletter at [scor.sc.gov/news-media](https://scor.sc.gov/news-media)

Visit [scor.sc.gov/Héme](https://scor.sc.gov/Héme) for more information.

**Contact:**

**Mary Louise Resch, MEd, SCGS**  
 Disaster Recovery VOAD Coordinator  
[ML.Resch@scor.sc.gov](mailto:ML.Resch@scor.sc.gov)  
 803.767.9320

**Bradley Craig**  
 Resilience Planning Manager  
[Bradley.craig@scor.sc.gov](mailto:Bradley.craig@scor.sc.gov)  
 803.667.5350

SCOR OFFICE OF RESILIENCE | PAGE 21

---

---

---

---

---

---

---

---



---

---

---

---

---

---

---