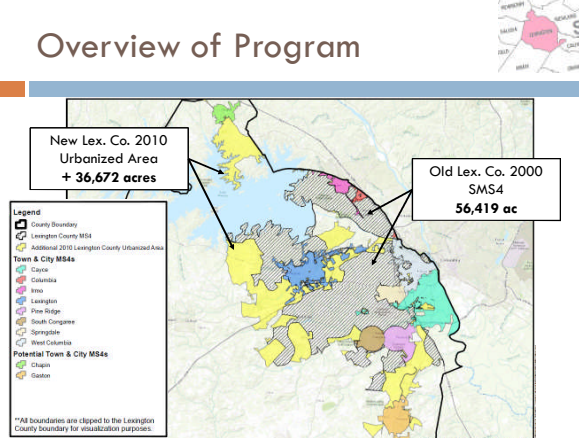


SC SMS4 Panel Discussion: Lexington County

SCASM September 10, 2015

Overview of Program



New Lex. Co. 2010 Urbanized Area + 36,672 acres


Old Lex. Co. 2000 SMS4 56,419 ac

Legend

- County Boundary
- Lexington County MSA
- Additional 2010 Lexington County Urbanized Area
- Town & City MSAs
 - Cayce
 - Columbia
 - Irmo
 - Lexington
 - Pine Ridge
 - South Congaree
 - Springdale
 - West Columbia
- Potential Town & City MSAs
 - Chick
 - Gaston



**All boundaries are clipped to the Lexington County boundary for visualization purposes.

Overview of Program: LCSWC



Lexington Countywide Stormwater Consortium (LCSWC)

- Lex. Co. + 7 Municipalities
 - Cities of Cayce and West Columbia
 - Towns of Irmo, Lexington, Pine Ridge, South Congaree and Springdale
- Benefits
 - For Cities & Towns SMS4 with small staff
 - Economically feasible
 - Consistent development standards throughout County



Overview of Program: Individual SMS4's Responsibilities



Overview of Program: SMS4 Responsibilities



Town/City SMS4s

- MCM 1&2: Collaborative effort
- MCM 3: Individual SMS4 responsibility
- MCM 4&5: Lex. Co. for all SMS4s
- MCM 6: Individual SMS4 responsibility
- Enforcement performed by individual SMS4

Lexington County

- MCM 1&2: Performed Countywide
- MCM 3:
 - Illicit Discharges – Countywide
- MCM 4&5: Performed County Wide
- MCM 6:
 - Municipal facilities – Countywide
 - Employee Training – Countywide (appropriate employees)
- Enforcement performed Countywide

Collaborative effort of TMDLs: SMS4 designated areas
Current (7 bacteria), Potential (2 additional bacteria)

Overview of Program

Staff and Funding

Public Works Department:

- Stormwater Manager (1)
- Environmental Coordinator (1)
- Hydrologist (1)
- Residential & Commercial Plan Reviewers (3)
- Commercial Inspector (1)
- Residential Inspectors (3)
- Floodplain Manager (1)
- As-built & Plat Reviewer (1)
- Outreach Assistant (.5)

Funding:

- General Fund
- Review and Inspection Fees supplement

MCM 5: Post Construction

- Privately-owned SW Systems
 - Privately maintained ~ 1100 ponds
 - County conducts Inspections and Enforcement
 - 95% = Commercial, 5% = Residential
- County Maintained Public SW Systems
 - Countywide SW system pipes and ditches
 - Countywide Inventory ~150 ponds
- Pond Maintenance Cycle
 - Required 3 to 4 years to complete, reallocation of staff, and budgetary planning for new equipment



Pre Maintenance



Post Maintenance

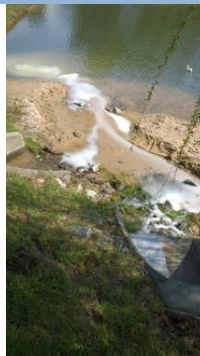


Pond Maintenance Challenges



MCM 3: Illicit Discharge Detection and Elimination

- Outfall Inventory
 - Past vs. Current Interpretation of "SMS4 Regulated Outfalls"
 - Evaluating outfalls in past inventory to eliminate old discharge points from new regulated outfalls
- Priority Areas for Dry Screening this Permit:
 - New Urbanized Area
- Dry Screening
 - Couple Stream Walks/Outfall Inventory with Dry Screening
 - Continue Aerial Infrared Thermography



MCM 3: Illicit Discharge Detection and Elimination

Lake Murray



Other Thoughts, Concerns, Interests...

- 319 Grants
 - DHEC assistance – Stormwater, Watershed and 319 Departments worked together to approve criteria to use of 319 funds in MS4 areas

Questions?

Lexington County
Public Works Stormwater Department
Provide quality services to our citizens at a reasonable cost.
Stormwater Manager: Sheri Armstrong sarmstrong@lex-co.com
Environmental Coordinator: Scott Martin smartin@lex-co.com
