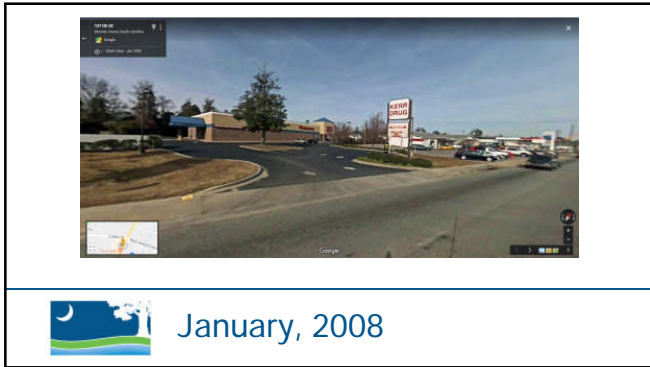
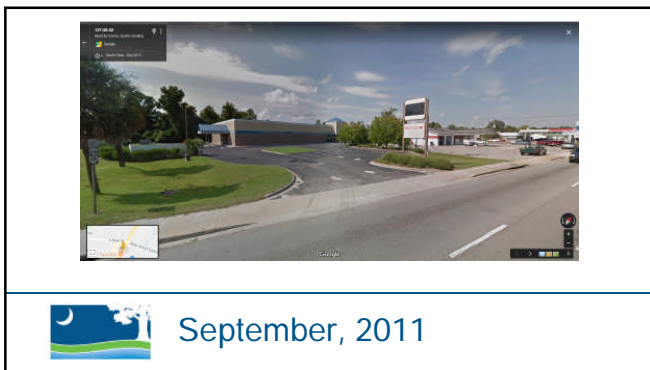
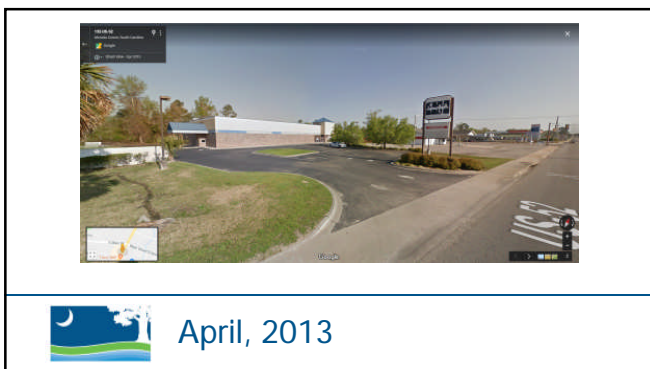


The information provided here is for informational and educational purposes and current as of the date of publication. The information is not a substitute for legal advice and does not necessarily reflect the opinion or policy position of the Municipal Association of South Carolina. Consult your attorney for advice concerning specific situations.









June, 2015



December, 2018



Under Construction



Parker's Kitchen –
Opening June 14



My Beautiful Streetscape



Gateway Signage



Gateway Signage



Abandoned Piggly Wiggly, 2007



Heart to Heart International Ministries



Umphlet Lumber Co, 1994



Umphlet Lumber Co, 2001



Moncks Corner Regional Recreation Complex



Abandoned Wal-Mart, 2008



Pointe North Church



Berkeley County Admin. Building
- Dec. 2007



Berkeley County Admin. Building
