

Body Worn Cameras



Body Worn Camera Legislation S.47

A few key points:

- The Law Enforcement Training Council shall develop guidelines for the use of body-worn cameras by state and local law enforcement agencies within one hundred eighty days of the effective date of this act.
- State and local law enforcement agencies shall develop policies and procedures for the use of body-worn cameras pursuant to the guidelines established by the Law Enforcement Training Council. The agencies shall submit the policies and procedures to the Law Enforcement Training Council within two hundred seventy days of the effective date of this act.
- A Body-Worn Camera Fund is established within the Department of Public Safety for the purpose of assisting state and local law enforcement agencies, the Attorney General's office, solicitors' offices, and public defenders' offices in implementing the body-worn cameras.
- Data recorded by a body-worn camera is not a public record subject to disclosure under the freedom of information act.
- A state or local law enforcement agency is not required to implement the use of body-worn cameras until the agency has received full funding.

GETTING STARTED

- Develop Your Policy
- Test Different Cameras to Ensure Best Fit for Your Agency
- Identify Supervisory Staff to Act as Your Body Camera Monitors
- Equip Every Officer
- Work Closely with Your IT Department
- REMEMBER... No Camera System is Guaranteed to Record Everything

Perceived Benefits of Body Cameras

- Increased transparency and legitimacy
 - This claim has not been sufficiently tested. There have been virtually no studies on citizens' views of the technology
- Improved police officer behavior
 - Several of the empirical studies have documented substantial decreases in citizen complaints and police uses of force
 - The decline in complaints and use of force may be tied to improved citizen behavior, improved police officer behavior, or a combination of the two

Perceived Benefits (cont.)

- Improved citizen behavior
 - There is evidence in the research that citizens are less likely to file frivolous complaints against officers wearing cameras
- Expedited resolution of complaints and lawsuits
 - Several of the empirical studies indicate that body worn cameras assist in the resolution of citizen complaints against police officers
 - No research has tested the technology's specific impact on lawsuits against police

Facts to be Considered

- A camera doesn't follow your eyes or see as they see.
- Some important danger cues can't be recorded.
- Camera speed differs from the speed of life.
- Cameras can see better in low light and pick up more detail than the human eye.
- Your body may block the view.
- A camera only records in 2D.
- The absence of sophisticated time-stamping may prove critical.
- One camera may not be enough.
- A camera encourages second-guessing.
- A camera can never replace a thorough investigation.

POLICY - MPPD O-61 AND O-61A



PURPOSE OF VIDEO



- GATHER EVIDENCE
 - VIDEO
 - AUDIO
- PROTECTION FROM ALLEGATIONS
- TRAINING
- SUPERVISION

PURPOSE OF TRAINING

- LEGALITIES
- ETHICAL
- OPERATION
 - HOW TO LOOK GOOD
 - DE-ESCALATION

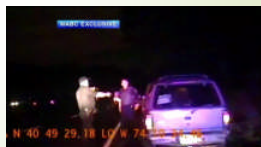


Points to Consider

- ADMISSIBILITY
 - US v. BIGGINS (1977)
- INAUDIBLE
- GAPS
- NON-EVIDENTIARY MATERIAL
- SLOWED DOWN OR STILL PICTURES
- REDACTED
- EXPECTATION OF PRIVACY
 - LOCATION
 - PERSON
- NOTIFICATION
 - WITNESS/VICTIM
- SPECIFIC SC ISSUES
 - DUI

TERMINOLOGY AND USAGE

- IDEAL VIDEO
- EVIDENCE
- AREA OF PERFORMANCE
- OFFICER SAFETY
- ARTICULATION/COMMUNICATION
- DURATION



LIGHTING

PRO

- OFFICER SAFETY
- MAKE IT VISIBLE



CON

- HOT SPOTS
- WIG / WAGS CAUSING SWAYING
- HGN ISSUES
- GLARE



Where to Put it




Where to Put it

Designed with **Officer Safety** in Mind

Center Mass of the Chest is the Best Location for Stability and Officer's "person" Perspective

Clipped or Pinned to the shirt, Vest or Jacket

Test Your Videos for Best Position According to your Height, Body Shape, Weapon Stance and Traffic Stop Stance



Field of View



68° - Read License Plate, See Dog in Vehicle and Identify Subject



130° - Unable to Read License Plate, See Dog or Identify Subject
